



Hello, Friends of New Harvest!

It's that time of month again. Here's what we got up to this past March:

Organization

- **We've selected our Research Director.** After interviewing some excellent candidates, we offered the Research Director position to soon-to-be-Dr. [Kate Krueger](#). Kate was selected because of her a) many years of experience in the lab, b) her demonstrated commitment to cellular agriculture, as exhibited in part by working with Perfect Day, c) her expertise in managing interdisciplinary teams of researchers, d) her grantwriting experience, e) her skills in creating and instructing and managing STEM courses from scratch. We think she'll do an excellent job of managing our research fellows and projects, building out our scientific board and network, and much more. Kate will relocate to New York to begin her new role in July.
- **ICYMI: Our unaudited 2016 financials.** In the spirit of transparency, we've publicized our financials from 2016 in [this Medium article](#), and in further detail in our unaudited [Profit and Loss Report for 2016](#). We're happy to share that these financials have prompted a few donations! As always we welcome any questions you may have about how New Harvest is spending your donor dollars.

Fundraising

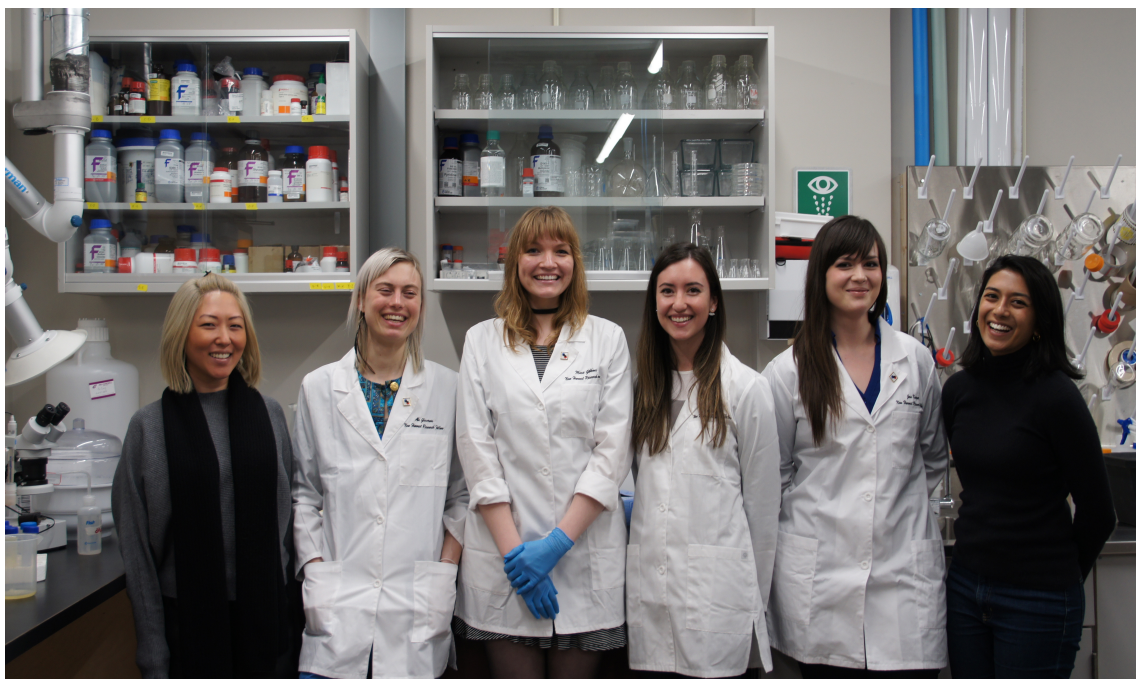
- **Fundraising status for Q1 2017.** New Harvest has raised \$135,930.82 between Jan 1 and March 31 of 2017. By comparison,

in Q1 of 2016, New Harvest had received \$73,970.66.

- **New donors.** We saw 38 new donors make their first contribution to New Harvest in Q1 2017.
- **More monthly contributors.** We started the year at 50 recurring donors and now we're up to 62. Our goal is to have 100 donors [making a monthly contribution](#) by the end of 2017.

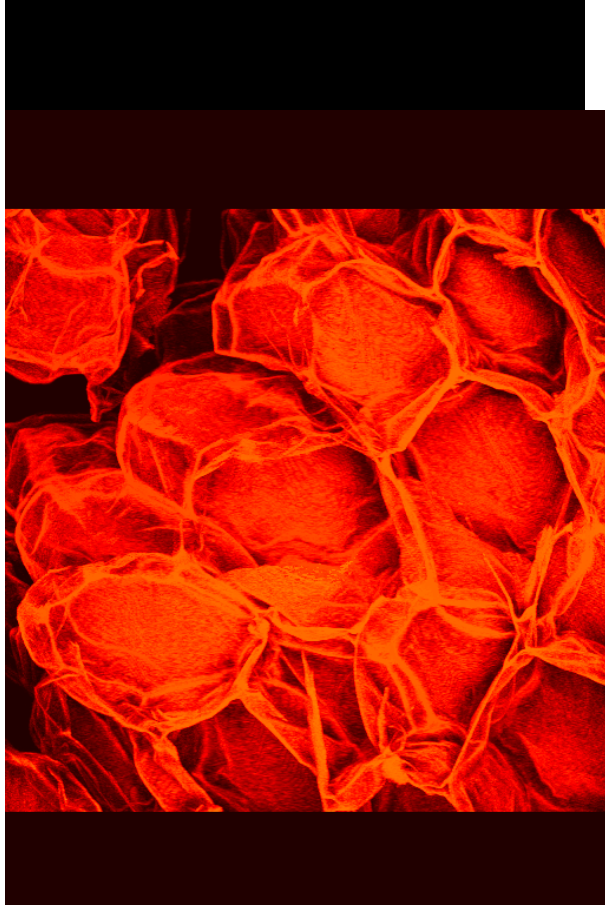
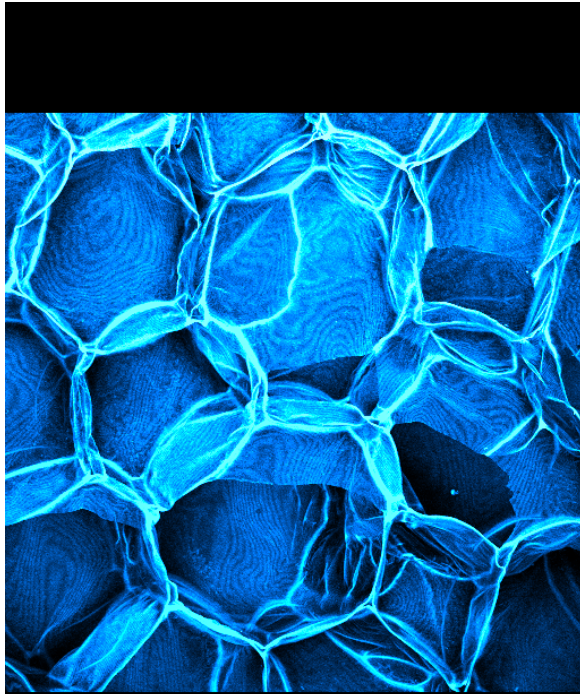
Research

- **New Harvest Research Fellow Retreat March 9-13.** Our retreat in Ottawa was a resounding success. With pro bono help on retreat programming from Allen Gunn of [AspirationTech](#), we were able to have a very fruitful few days working through the challenges and opportunities within the New Harvest Fellowship Program. We also managed to shoot some b-roll and stock photos of the team while we were all in one place, so keep an eye out as we release those to through the press and social media in the coming months. Here's our favourite shot from the weekend - note the custom lab coats!



- **New Harvest Research Fellows as Visiting Scholars at the University of Ottawa.** Abi and Jess have been plugging away trying out some of the Pelling protocols on their research as visiting scholars at the University of

Ottawa. Abi has been using root systems as a means for developing vasculature systems in gels as scaffolding material. Jess has been trying out some of the decellularization processes to use vegetables as scaffolds for the pork myoblasts that she has been cultivating at Kent State. Check out this multiphoton microscopy of two scaffolds that Jess made!



- **New proposal on cultured meat stoichiometry.** We have just received a proposal from the UK focused on the stoichiometry of cultured meat production. Here is an excerpt from the "Rationale" section of the application:

Following the proof of concept that meat can be cultured in a lab by Prof Mark Post in 2013, the next step is to design an efficient process that can be scaled-up to an industrial size process with the goal of making cultured meat a financially viable large-scale production process. To accomplish this, engineering fundamentals of feed requirements and waste products need to be quantified for the various bioreactor options available. This can then be translated into the design of a bioreactor that is efficient in terms of capital and operating costs. The focus will be on designing a bioreactor that can be scaled up for the industrial cultivation of meat cells for use in the production of processed meat products.

We're looking forward to the review and revision process to follow. This is crucial research which will inform life cycle assessments for cultured meat production. **This research will cost £75,200 total (approximately \$94,000 USD) for 4 years of research.** This project is relatively inexpensive because of unique funding support that the candidate has already received through their university. If you are interested in supporting this project once it goes through our review process, or have any questions about it, please get in touch!

- **New proposal in the works.** We are expecting a new proposal for additional research to be conducted at Dr. David Kaplan's lab out of Tufts University. More coming soon.
- **Outsourced iPSC development update.** Dr. Sunita D'Souza at the IPSC core facility at Mount Sinai has been keeping us informed of the progress of a pig IPSC project that she has been working on. It has so far been unsuccessful. She will continue to keep us informed as the science advances. It is looking less likely that we may proceed in this route. As we've seen with Research Fellow Marie Gibbons and the turkey cells that she's derived, there is a lot of value in having the cell cultures come with firsthand experience developing and working with the cultures. More to be decided on this topic in coming months.

Communications

- **New Harvest 2017 Conference Planning.** The date and venue for #NewHarvest2017 are nearly finalized - we're holding off on making the official announcement until the contracts are in place. The conference web page will be launched in about two weeks, so stay tuned to our newsletter and social media!
- **I recorded a live interview** this month with Calgary radio station NewsTalk770, available to stream [here](#). Always excited for the opportunities that come out of my home province of Alberta, Canada! :)
- **Guest lecture at Yale University March 27th.** Erin and I gave a guest lecture for a graduate course called "Social and Technical Innovations in Global Food Systems" at Yale. It was a wonderful opportunity to try a joint presentation format and include more of the Communications perspective, and we were able to go much more in-depth in our discussion and Q&A. We spent about 2 hours total in discussion with students who had prepared in-depth questions from the preparatory materials that we provided. It was a robust conversation, to say the least!
- **Symposium presentation at Tufts University March 31st.** I was invited to speak at the Friedman School of Nutrition, Science, and Policy's Gershoff Symposium, focused on "Next Generation Food Production." This was a one day event organized solely by the Gershoff Fellows at Tufts. The student who selected and invited us works on muscle tissue culture in the lab! This was an excellent opportunity to reach the scientific community at Tufts. I was particularly pleased to be approached by Principal Investigators after the talk who were excited about this work. One of them shared that he has been wanting to grow crab claws in culture for decades! The talk brought up several researchers who were eager to collaborate with Natalie (our Fellow at Tufts) on her cultured meat work.
- **New Harvest at ProFood Tech in Chicago, April 6.** I'll be moderating a discussion at the International Dairy Foods Association [ProFood Tech](#) conference, featuring Ryan from Perfect Day as a speaker on the panel.
- **Erin will be speaking on a Future of Food panel, April 19** alongside Algama and Exo Protein in NYC.
- **Cellular agriculture as a "Reducetarian Solution"?, April 20.** Erin is speaking at a book talk for [The Reducetarian Solution](#) next month in NYC.

2 April 2017

- **Panel discussion at NYU, April 21.** I'll be speaking alongside Kent Kirshenbaum, Alan Levinovitz, and Ben Wurgaft at "Modern Meat: The Science and Culture of Meat Substitutes," in NYC.

And I think that's about it for this month! Stay tuned for news on the Research Director - I hope you're as excited as I am to see a new member on New Harvest's team. Don't forget that *all of our cherished donors* (that means you!) are part of this team too. Truly, we could not do any of this work without your ongoing support.

Have a wonderful weekend,

A handwritten signature in black ink, appearing to read 'Isla'.

Executive Director, New Harvest